



PHS



Powder Handling
Station

SINTERIT SOLUTION ON THE NEXT LEVEL

LISA
PRO*

PLATFOR
M

PHS

SANDBLASTER XL

ATEX
VACUUM
CLEANER



* PHS is compatible also with Lisa

New quality of powder handling

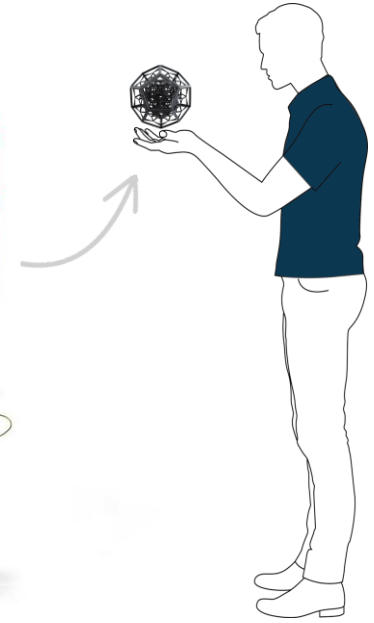
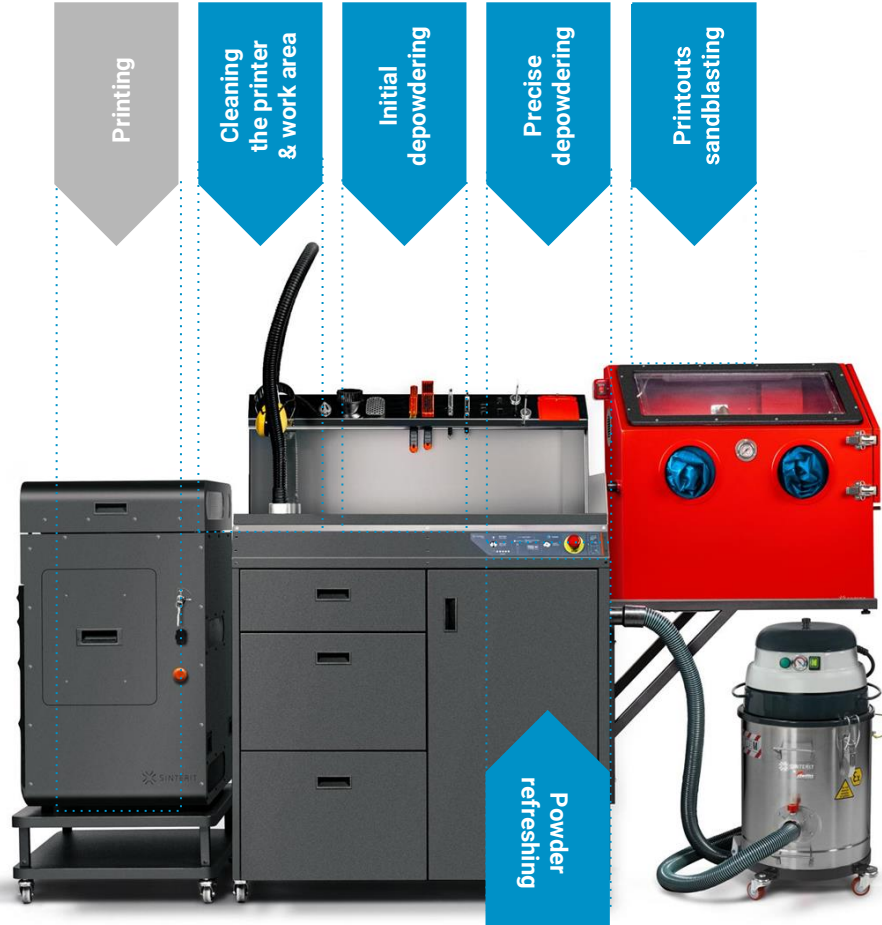
Supporting device designed to make post-processing and powder recovery as clean as possible:

- **All processes in one place**
- **Clever workspace** - an ergonomic and user friendly solution
- **Tools close to you** - everything you need is always at hand
- **Easy depowdering** in 5 simple steps
- Super hero - **not just for one printer!**
- **PHS in data** - technical details



All processes in one place

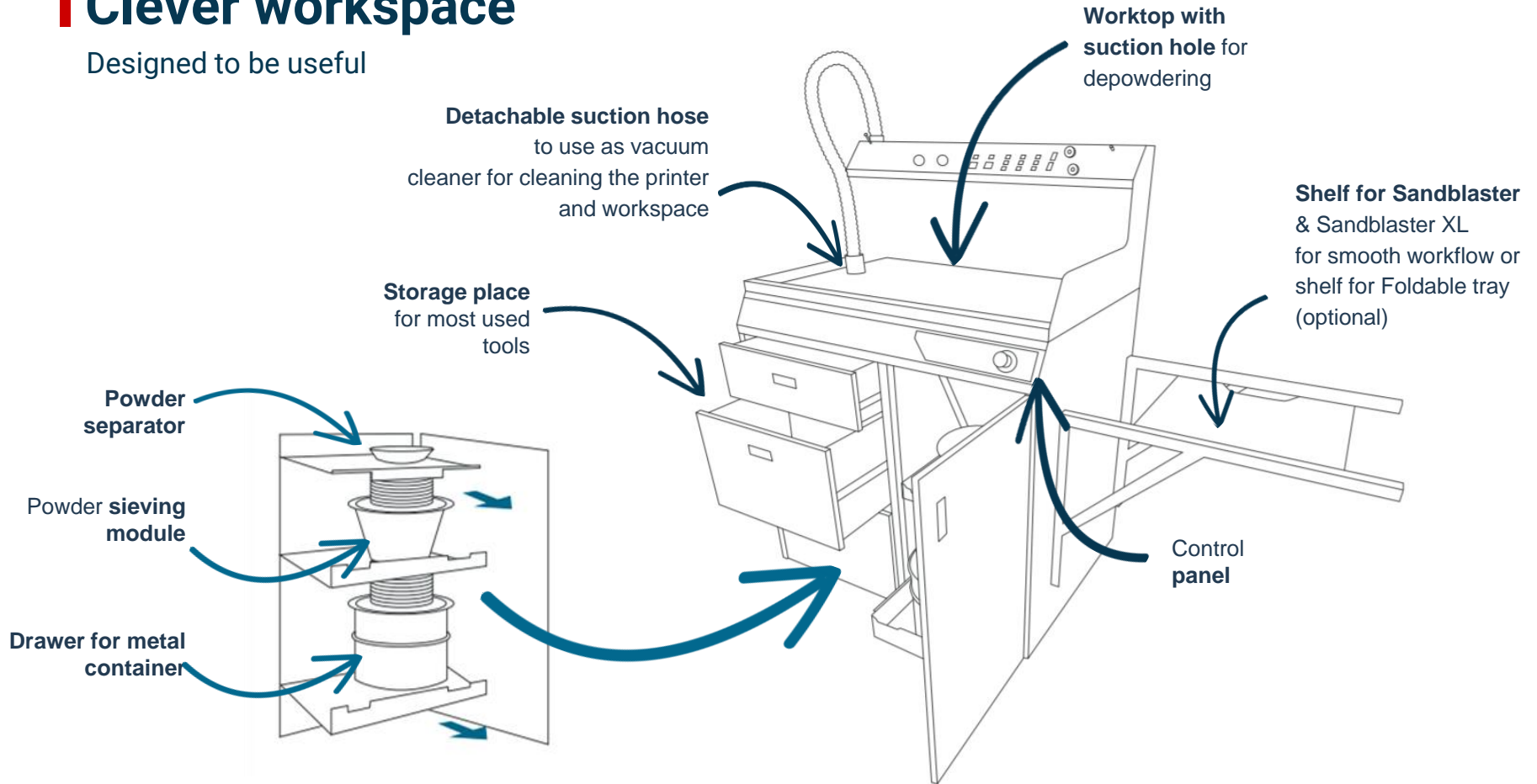
Post-processing
and powder
recovery - all
processes
in one!





Clever workspace

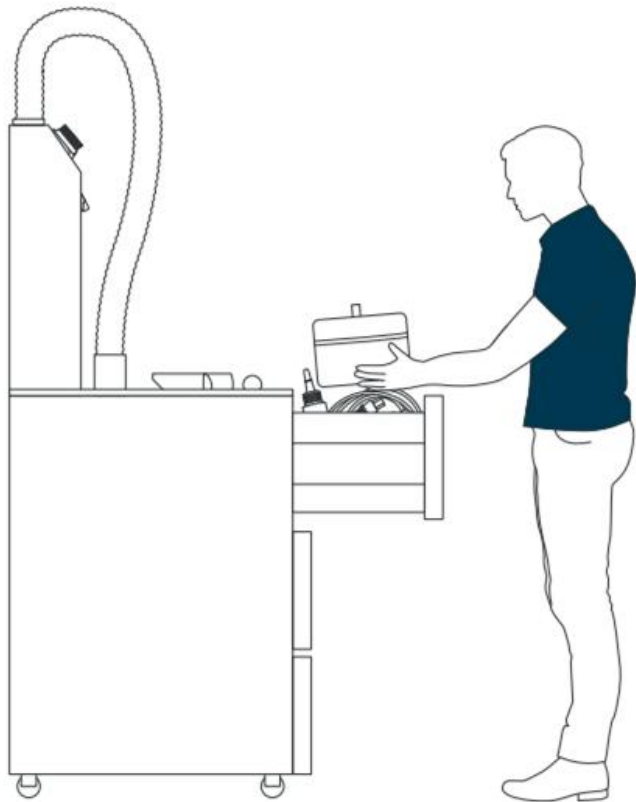
Designed to be useful





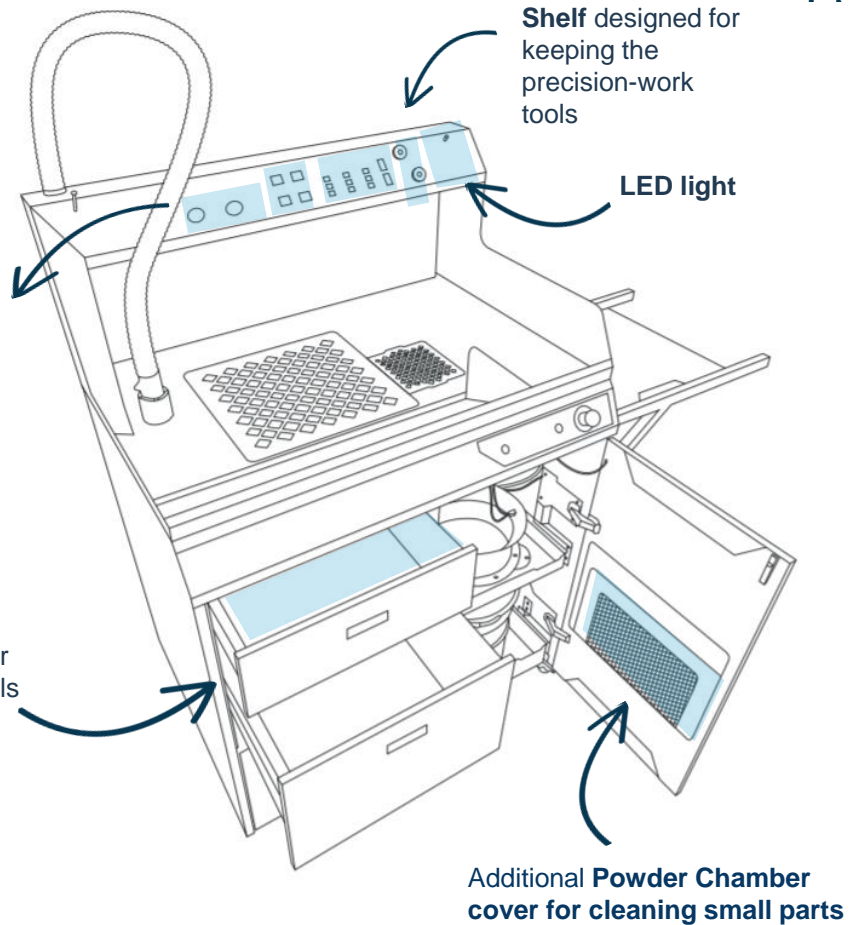
Tools close to you

Everything you need is always at hand



Holes for **dedicated suction hose nozzles**

3 drawers: storage space for depowdering tools



Shelf designed for keeping the precision-work tools

LED light

Additional **Powder Chamber cover** for cleaning small parts



Depowdering in 5 simple steps

PHS makes post processing of printouts in 3D SLS technology **faster, ergonomic and user friendly experience**



1 Initial post processing

2 Precise depowdering

3 Printouts sandblasting

4 Cleaning the printer & work area

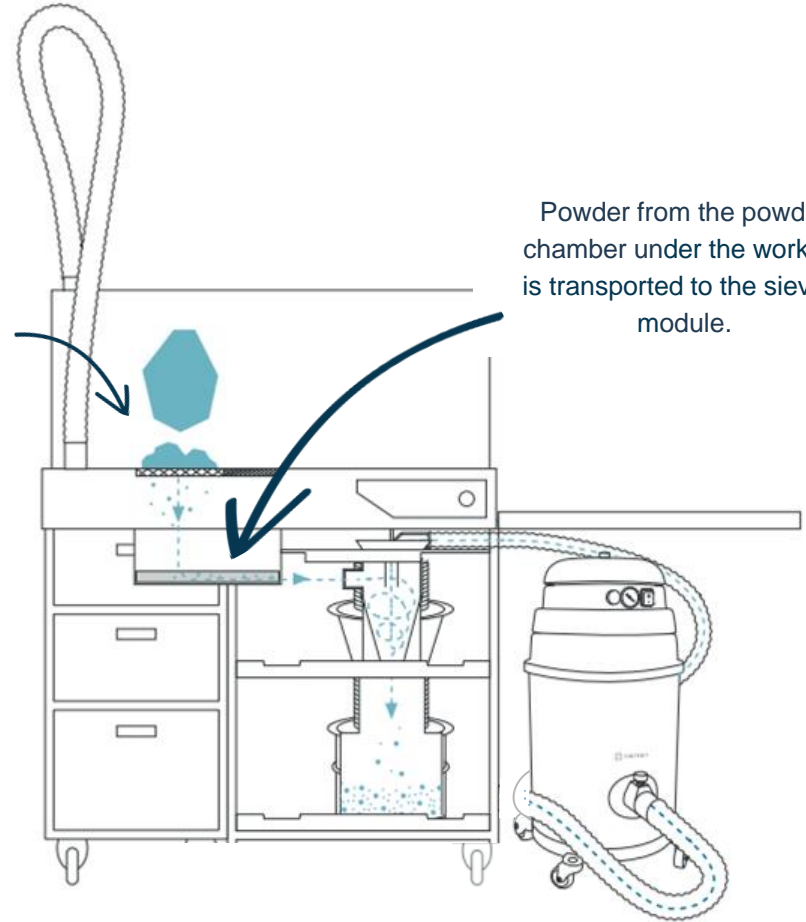
5 Powder refreshing



1 Initial post processing



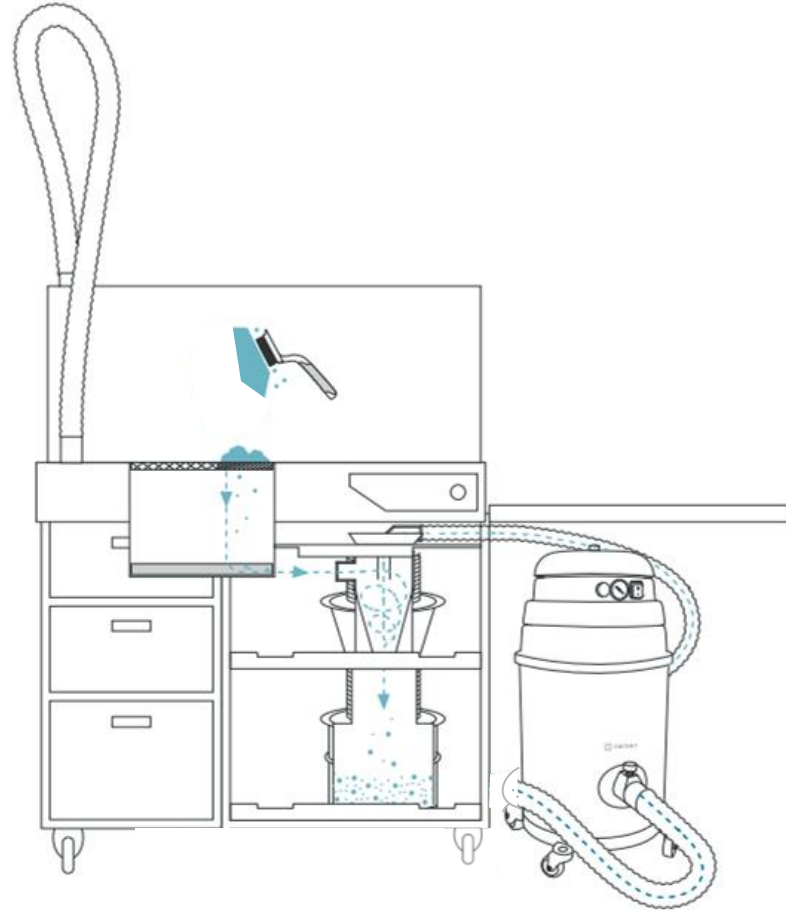
Thanks to the Chamber cover with large holes located on the worktop, you can easily push the unsintered powder through, while pre-cleaning the print.



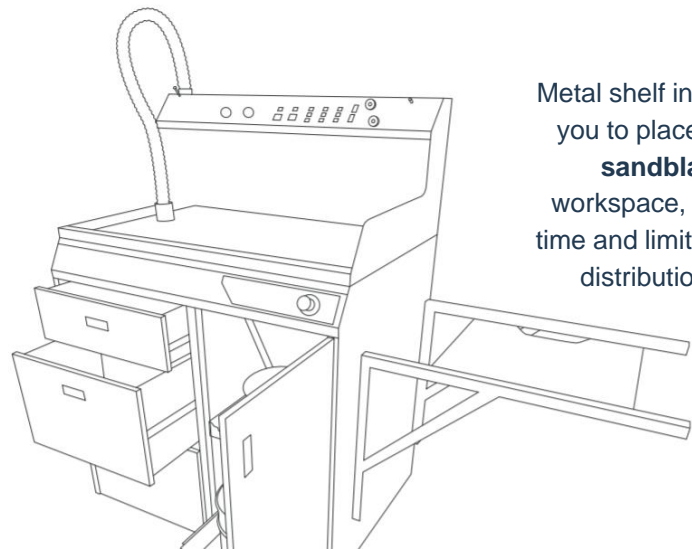
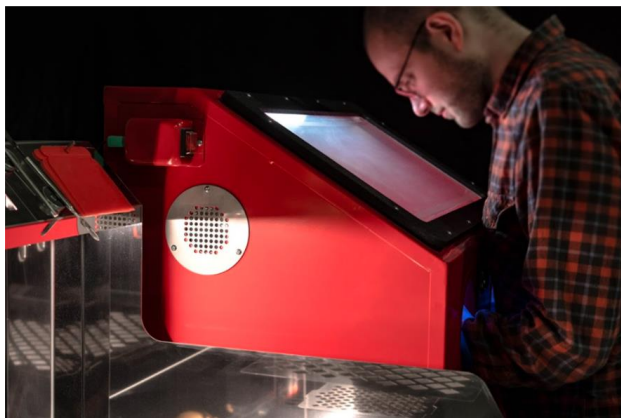
Powder from the powder chamber under the worktop is transported to the sieving module.



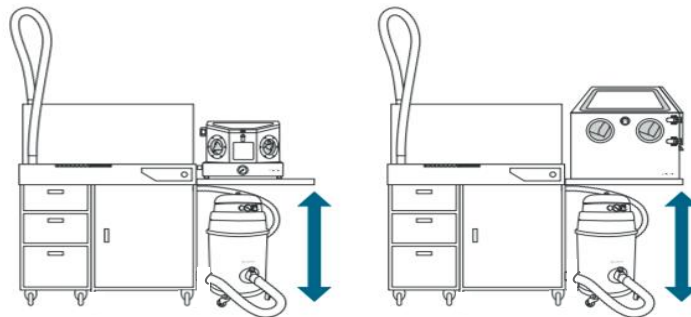
2 Precise depowdering



3 Printouts sandblasting



Metal shelf included in the set, allows you to place the **Foldable Tray** or **sandblaster** close to PHS workspace, shortening the working time and limiting the radius of powder distribution outside the station

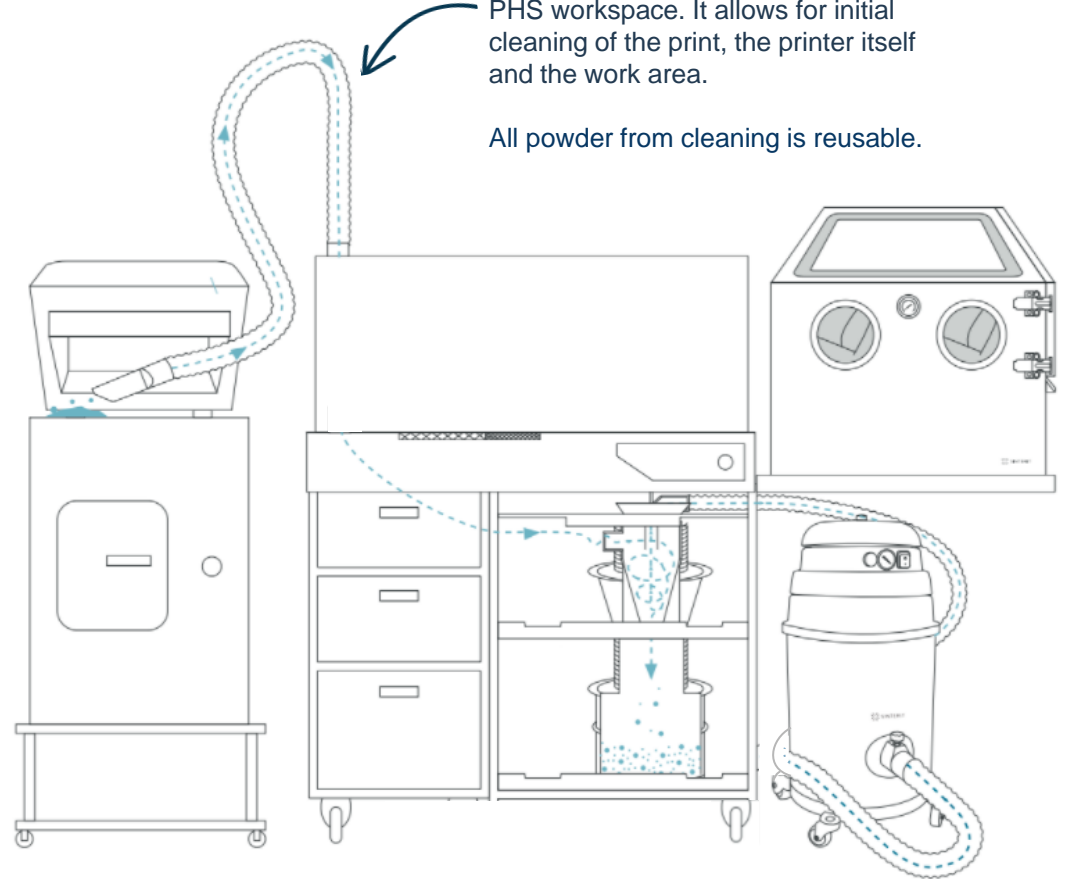


Two mounting heights.
Dedicated for both Sandblaster and Sandblaster XL.



4

Cleaning
the printer
& work area



Flexible 2m suction hose reaches easily both the printer and the whole PHS workspace. It allows for initial cleaning of the print, the printer itself and the work area.

All powder from cleaning is reusable.

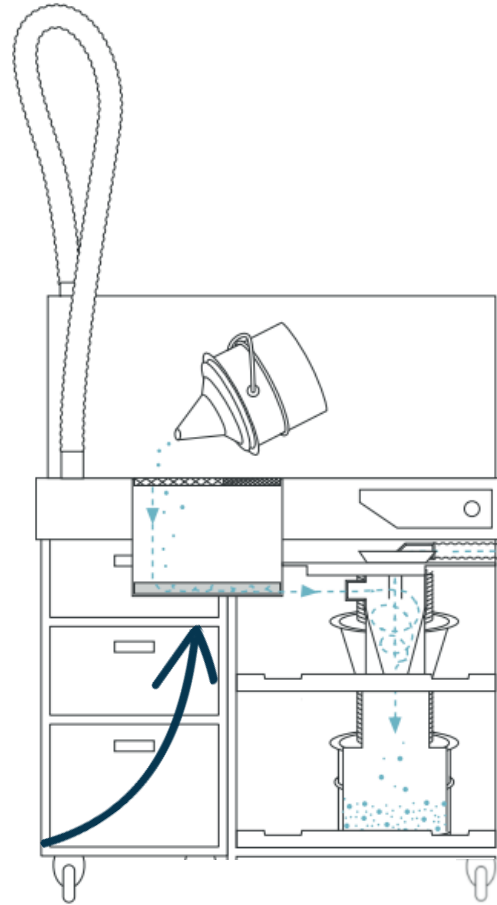




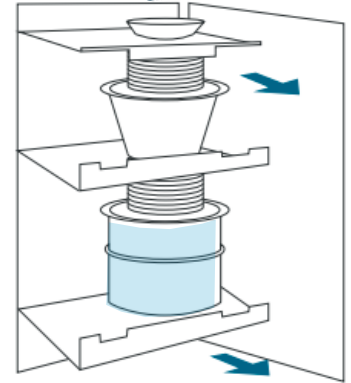
5 Powder refreshing



All the recovered powder is transferred to a sieving module and then goes into a metal container. Now it's ready to reuse



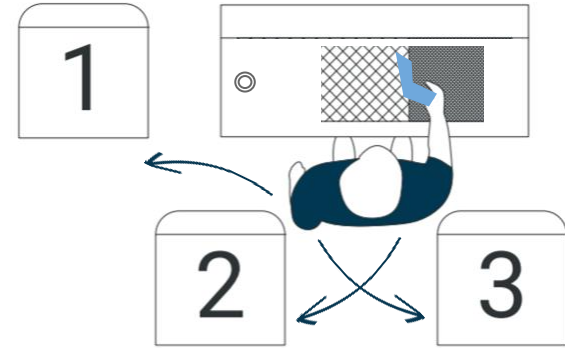
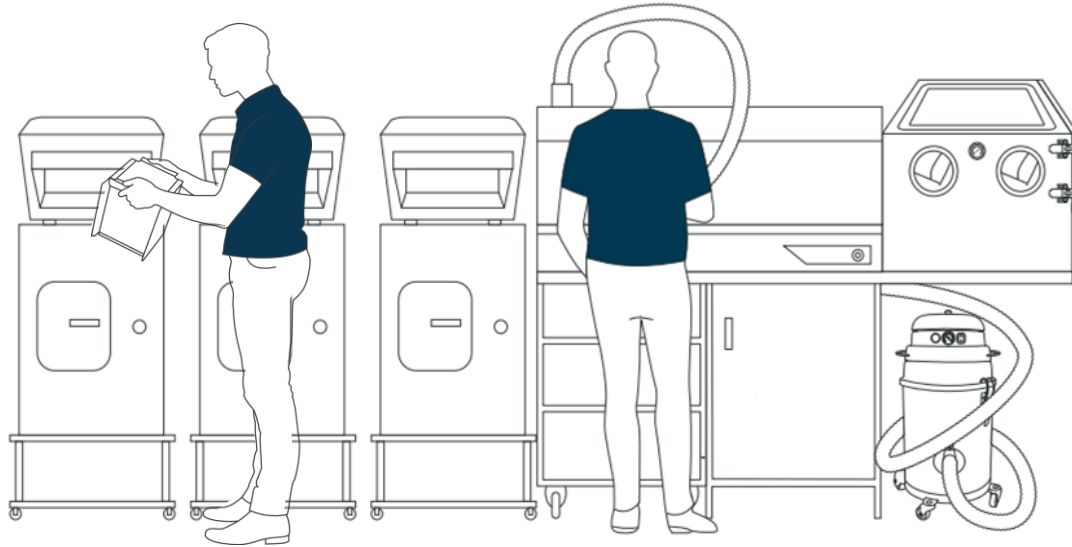
The sieving module located under the worktop sieves all the powder spilled during work and **make it ready for further process** - mixing the used powder with the fresh one





| Super hero - not just for one printer!

Enough to support up to three printers





SINTERIT
PH

SUCTION
VACUUM

SIFTING
ON/OFF

SUCTION

HANDLE
DEPOWDERING
ZONE

POWER

LIGHT
ON/OFF

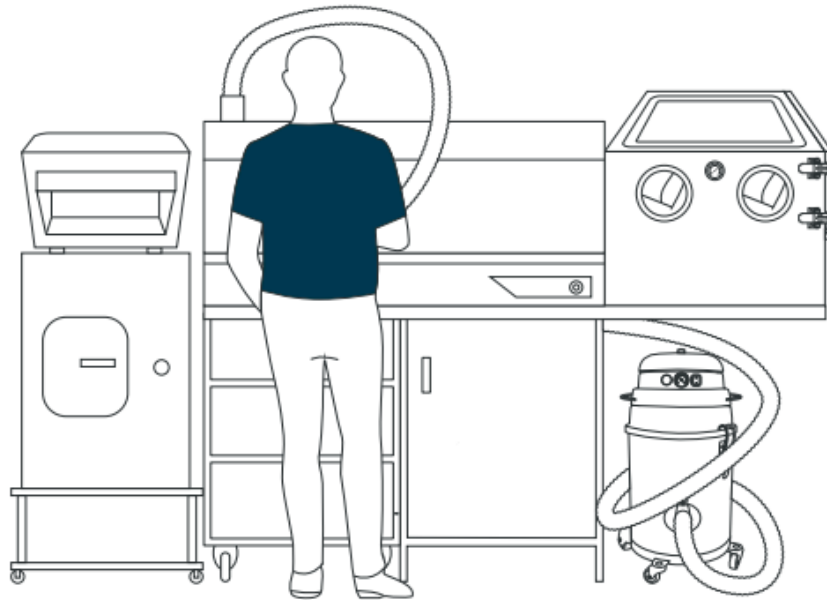
EMERGENCY
STOP

TURN ON
VACUUM
FIRST





PHS in data



Specification	
Dimension [mm / in] :	700 x 1000 x 1580 / 27.6 x 39.4 x 62.2
Weight [kg / lb]:	150 / 331
Space of installation [mm / in] :	1700 x 2200 x 1800 / 66.9 x 86.6 x 70.9
Labor [min] :	~ 25 for whole process
Set contain:	Sieving module
	Built in powder separator
	3 drawers - storage space
	Shelf for sandblaster
	Hoses, connectors & special 3d printed vacuum inlets
	LED lighting
	Metal container
Powder capacity [l / gal]	max 8 / 1.8
Power supply [V]	110/230 [V] AC, 12 VDC 6,67 A, 80W

Thank You

Do you have any questions?

sales@sinterit.com or your dedicated KAM

+48 570 967 854

www.sinterit.com



Sinterit sp. z o.o.
ul. Nad Drwiną 10 bud. B3
30-741 Krakow
Poland
www.sinterit.com

